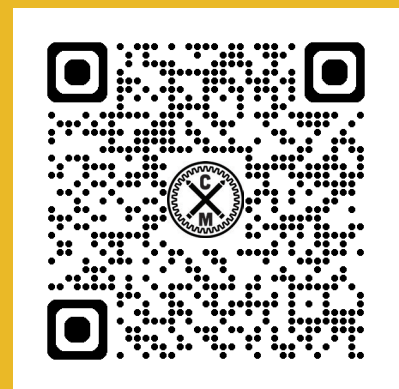
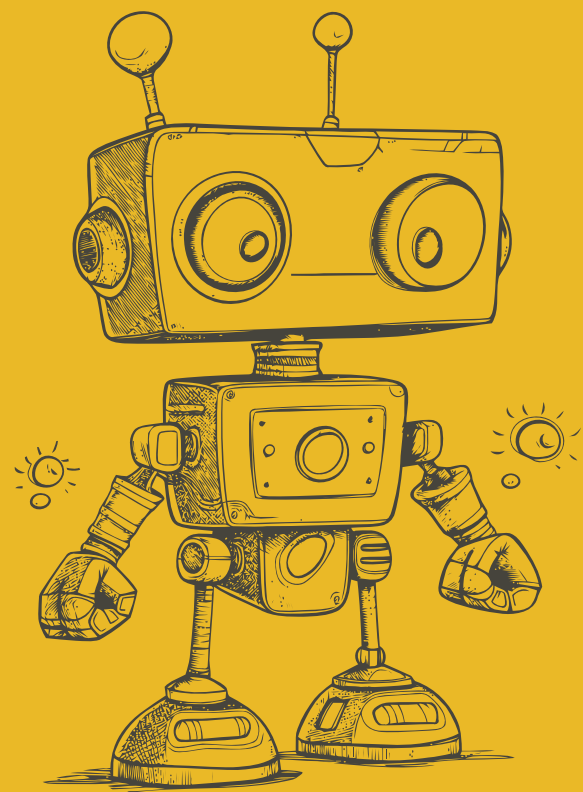



REGISTER AT  
[WWW.CREATEAMAKER.ORG](http://WWW.CREATEAMAKER.ORG)

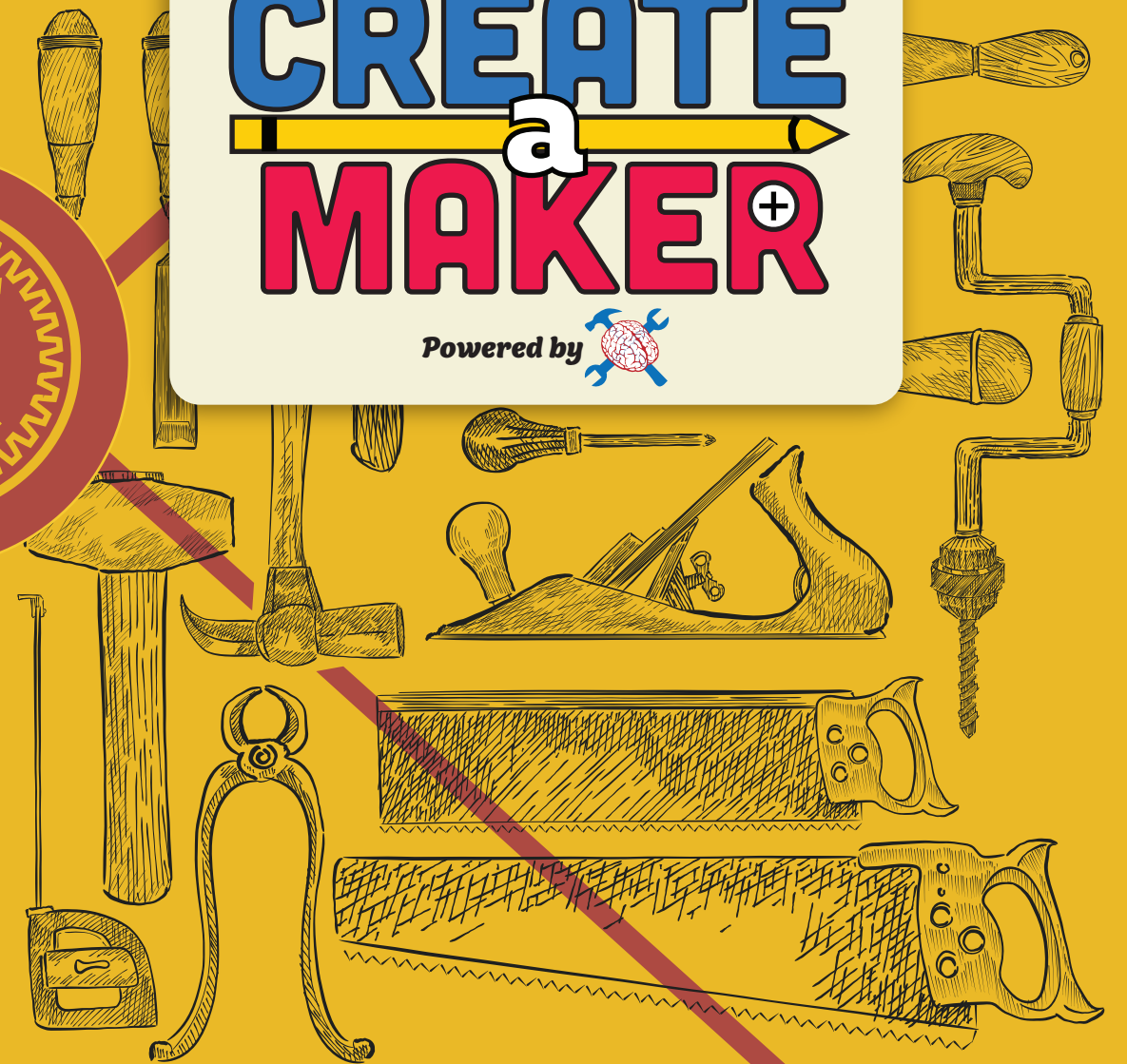


Create a Maker  
27601 Forbes Rd. Ste 6  
Laguna Niguel, CA 92677

SUMMER CAMPS @

CREATE  
a  
MAKER+

Powered by 



inspiring the next generation of makers  
@createamakeroc  
[www.createamaker.org](http://www.createamaker.org)

## SCHEDULE

Morning : 9am - 11:30am

Afternoon : 12:15pm - 2:45pm

Full Day : 9am - 3pm

## DETAILS

\*You can sign up for a morning and afternoon camp on the same day and stay FREE for lunch break. Pack your lunch!

\*Pack a snack and drink! - We take a break half way into classes as our students get hungry!

\*Classes have a maximum of 14-18 students per class.

\*What do they do during lunch break? - Eat, take a brain break, play board games, watch maker type shows like Mark Rober!

### Week 1 : 6/8 - 6/12

Morning: *3d Printing and Design* AGES 9-14

Afternoon: *Battle Bots w/LEGO* AGES 8-12

### Week 2 : 6/15 - 6/19

Morning: *Intro to Making* AGES 7-11

Afternoon: *Intro to Woodworking* AGES 7-11

### Week 3 : 6/22 - 6/26

Full Day: *Make a BATTLE BOT!* AGES 10-14

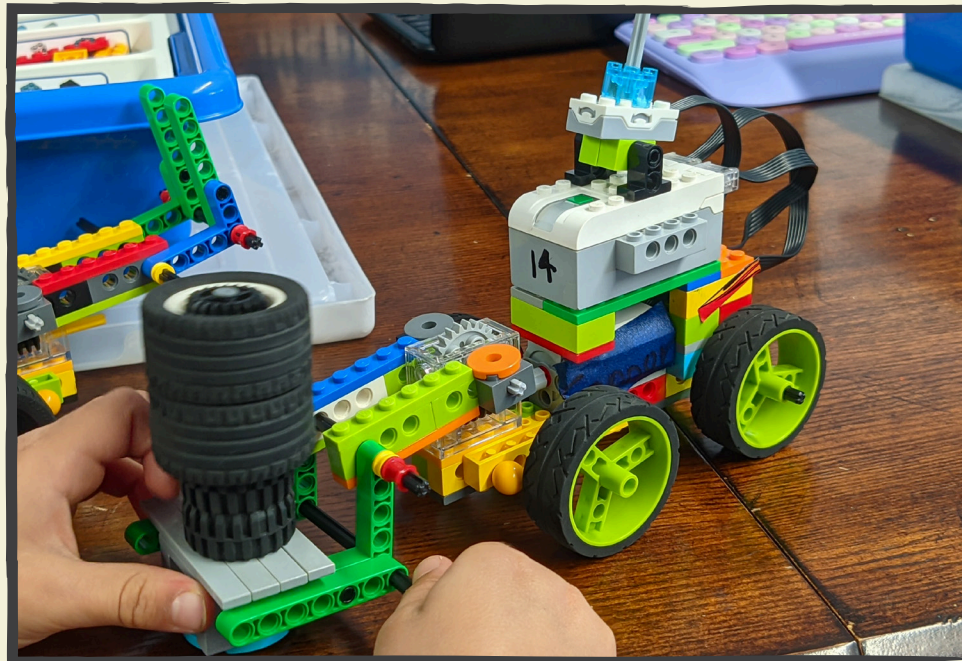
### Week 4 : 6/29 - 7/3

Morning: *Jr. Robotics w/LEGO* AGES 7-11

Afternoon: *Stop Motion Animation* AGES 7-12

### Week 5 : 7/6 - 7/10

Full Day: *Makers Challenge* AGES 9-14



### Week 6 : 7/13 - 7/17

Morning: *3d Printing and Design* AGES 9-14

Afternoon: *Battle Bots w/LEGO* AGES 8-12

### Week 7 : 7/20 - 7/24

Morning: *Intro to Making* AGES 7-11

Afternoon: *Intro to Woodworking* AGES 7-11

### Week 8 : 7/27 - 7/31

Full Day: *Make a BATTLE BOT!* AGES 10-14

### Week 9 : 8/3 - 8/7

Morning: *Jr. Robotics w/LEGO* AGES 7-11

Afternoon: *Stop Motion Animation* AGES 7-12

### Week 10 : 8/10 - 8/14

Full Day: *Makers Challenge* AGES 9-14



## COST

**\$279**

3d Printing and Design  
Intro to Making  
Intro to Woodworking

**\$205**

Battle Bots w/LEGO  
Jr. Robotics w/LEGO  
Stop Motion Animation

**\$605**

Make a BATTLE BOT!  
Makers Challenge

## EXTRAS

Only staying half day and want to add the supervised lunch time from 11:30am - 12:15pm? Add it for only \$5/day.

More details at:  
[www.createamaker.org](http://www.createamaker.org)